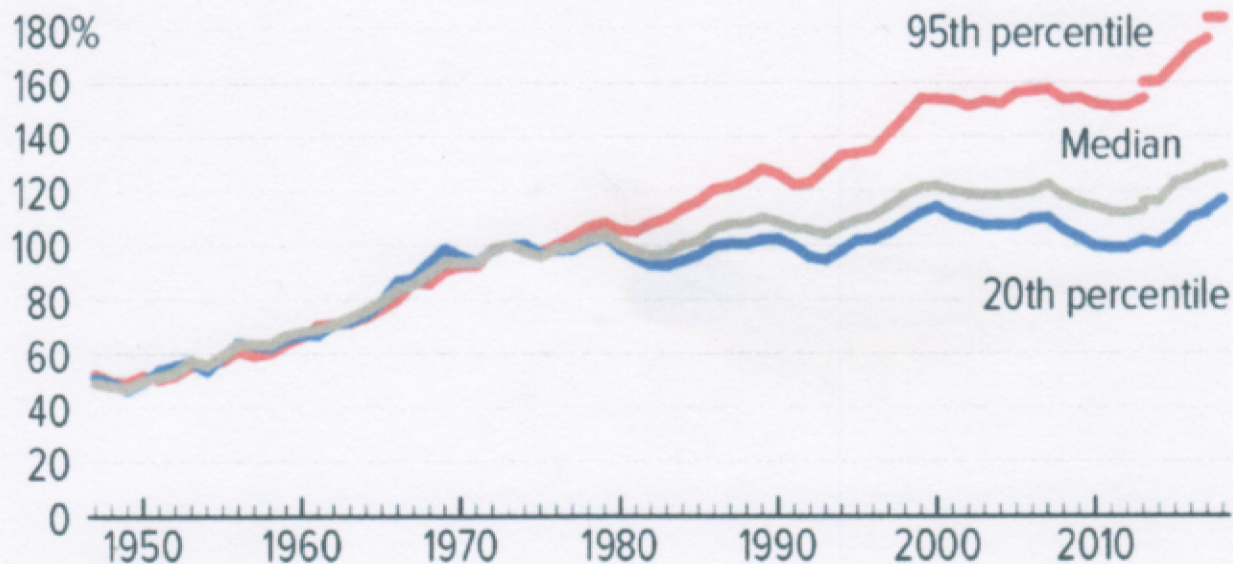


Decades — But Not Since Then

Real family income between 1947 and 2018, as a percentage of 1973 level

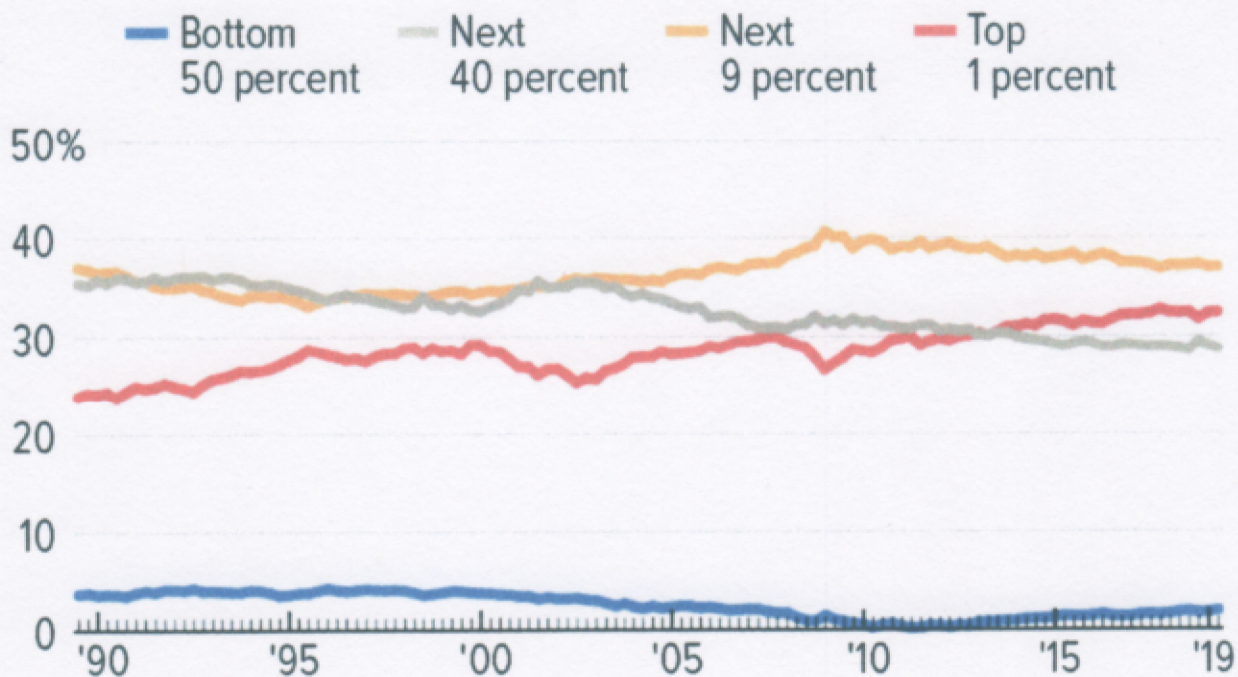


Note: Breaks indicate implementation of a redesigned questionnaire (2013) and an updated data processing system (2017).

Source: CBPP calculations based on U.S. Census Bureau Data

Share of Wealth Held by Wealthiest 1 Percent Has Risen Since 1989; Bottom 50 Percent Share Tiny

Share of total wealth (with groups ranked by wealth)



Source: The Distributional Financial Accounts (2019), Federal Reserve Board